

Wireless Communication Survey

please circle the pictures or statements in the
following slides that best answer the
questions

What Area of Nassau County Do You Live In:

1. Incorporated Island Area
2. Incorporated Non-Island Area
3. Unincorporated Island Area
4. Unincorporated Non-Island East of I-95
5. Unincorporated Non-Island West of I-95
6. I do not live in Nassau County

I Own A Personal Wireless Device Cell Phone, Tablet or Other Smart Device

1. YES
2. NO

My Network Coverage Where I Live Is:

1. Generally Acceptable
2. Moderately Acceptable
3. Not Acceptable
4. N/A – I don't own a PWS device

When I Travel In and Around Nassau County My Network Coverage Is:

1. Generally Acceptable
2. Moderately Acceptable
3. Not Acceptable
4. N/A – I do not own a PWS device

My Service Provider Is:

1. AT&T
2. MetroPCS
3. Sprint
4. T-Mobile
5. Verizon
6. Other
7. I do not want to respond
8. N/A – I do not own a PWS device

Rank 1-3 The **Non-Concealed Tower** You Prefer in **Incorporated Island Areas**



1. Monopole
2. Lattice
3. Guy With Support
4. None of These
5. No Preference



Rank 1-3 The Non-Concealed Tower You Prefer in Incorporated Non-Island Areas



1. Monopole
2. Lattice
3. Guy With Support
4. None of These
5. No Preference



Rank 1-3 The **Non-Concealed Tower** You Prefer In **Unincorporated Island Areas**



1. Monopole
2. Lattice
3. Guy With Support
4. None of These
5. No Preference



Rank 1-3 The **Non-Concealed Tower** You Prefer in **Unincorporated Non-Island Areas East of I-95**



1. Monopole
2. Lattice
3. Guy With Support
4. None of These
5. No Preference



Rank 1-3 The Non-Concealed Tower You Prefer in Unincorporated Areas West of I-95



1. Monopole
2. Lattice
3. Guy With Support
4. None of These
5. No Preference



Rank 1-3 The Non-Concealed Tower You Prefer in Incorporated Island Areas



1. Light Stanchion
2. Wrapped Pole
3. Painted Pole
4. None of These
5. No Preference



Rank 1-3 The Non-Concealed Tower You Prefer in Incorporated Non-Island Areas



1. Light Stanchion
2. Wrapped Pole
3. Painted Pole
4. None of These
5. No Preference



Rank 1-3 The Non-Concealed Tower You Prefer in Unincorporated Island Areas



1. Light Stanchion
2. Wrapped Pole
3. Painted Pole
4. None of These
5. No Preference



Rank 1-3 The Non-Concealed Tower You Prefer in Unincorporated Non-Island Areas East of I-95



1. Light Stanchion
2. Wrapped Pole
3. Painted Pole
4. None of These
5. No Preference



Rank 1-3 The Non-Concealed Tower You Prefer in Unincorporated Areas West of I-95



1. Light Stanchion
2. Wrapped Pole
3. Painted Pole
4. None of These
5. No Preference



Rank 1-3 The Concealed Tower You Prefer in Incorporated Island Areas



1. Flag Pole
2. Slick Stick
3. 3-Legged Pole
4. None of These
5. No Preference

Rank 1-3 The Concealed Tower You Prefer In Incorporated Non-Island Areas



1. Flag Pole
2. Slick Stick
3. 3-Legged Pole
4. None of These
5. No Preference

Rank 1-3 The Concealed Tower You Prefer in Unincorporated Island Areas



1. Flag Pole
2. Slick Stick
3. 3-Legged Pole
4. None of These
5. No Preference

Rank 1-3 The Concealed Tower You Prefer in Unincorporated Non-Island Areas East of I-95



1. Flag Pole
2. Slick Stick
3. 3-Legged Pole
4. None of These
5. No Preference

Rank 1-3 The Concealed Tower You Prefer in Unincorporated Areas West of I-95



1. Flag Pole
2. Slick Stick
3. 3-Legged Pole
4. None of These
5. No Preference

Rank 1-3 The **Concealed Tower** You Prefer in Incorporated Island Areas



1. Clock Tower
2. Banner Pole
3. Faux Dormer
4. None of These
5. No Preference



Rank 1-3 The **Concealed Tower** You Prefer in **Incorporated Non-Island Areas**



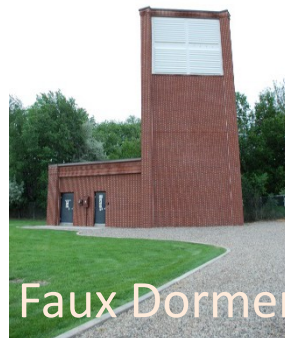
1. Clock Tower
2. Banner Pole
3. Faux Dormer
4. None of These
5. No Preference



Rank 1-3 The **Concealed Tower** You Prefer in **Unincorporated Island** **Areas**



1. Clock Tower
2. Banner Pole
3. Faux Dormer
4. None of These
5. No Preference



Rank 1-3 The Concealed Tower You Prefer in Unincorporated Non-Island Areas East of I-95



1. Clock Tower
2. Banner Pole
3. Faux Dormer
4. None of These
5. No Preference

Rank 1-3 The Concealed Tower You Prefer in Unincorporated Areas West of I-95



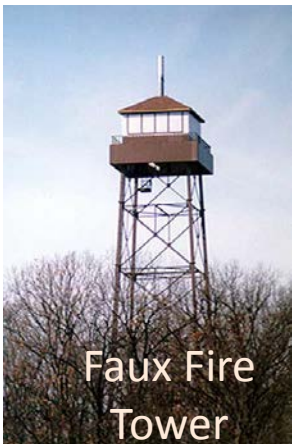
1. Clock Tower
2. Banner Pole
3. Faux Dormer
4. None of These
5. No Preference



Rank 1-3 The **Concealed Tower** You Prefer in **Unincorporated** **Island Areas**



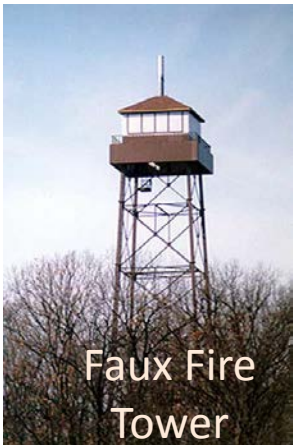
1. Faux Silo
2. Faux Fire Tower
3. Monopine (Faux Tree)
4. None of These
5. No Preference



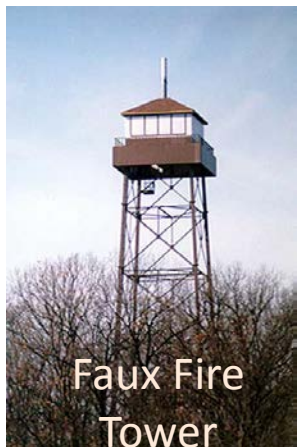
Rank 1-3 The Concealed Tower You Prefer in Unincorporated Non-Island Areas East of I-95



1. Faux Silo
2. Faux Fire Tower
3. Monopine (Faux Tree)
4. None of These
5. No Preference



Rank 1-3 The **Concealed Tower** You Prefer in **Unincorporated** **Areas West of I-95**



1. Faux Silo
2. Faux Fire Tower
3. Monopine (Faux Tree)
4. None of These
5. No Preference

Rank 1-3 The **Non-Concealed Base Station** You Prefer in **Incorporated Island Areas**



1. Additional Pole in Utility Easement
2. Attachments in Utility Easement
3. Water Tank
4. None of These
5. No Preference



Rank 1-3 The **Non-Concealed Base Station** You Prefer in **Incorporated Non-Island Areas**



1. Additional Pole in Utility Easement
2. Attachments in Utility Easement
3. Water Tank
4. None of These
5. No Preference



Rank 1-3 The **Non-Concealed Base Station** You Prefer in **Unincorporated Island Areas**



1. Additional Pole in Utility Easement
2. Attachments in Utility Easement
3. Water Tank
4. None of These
5. No Preference



Rank 1-3 The **Non-Concealed Base Station** You Prefer in **Unincorporated Non-Island Areas East of I-95**



1. Additional Pole in Utility Easement
2. Attachments in Utility Easement
3. Water Tank
4. None of These
5. No Preference



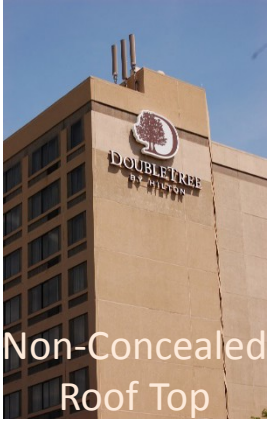
Rank 1-3 The Non-Concealed Base Station You Prefer in Unincorporated Areas West of I-95



1. Additional Pole in Utility Easement
2. Attachments in Utility Easement
3. Water Tank
4. None of These
5. No Preference



Rank 1-3 The **Base Station** you Prefer in Incorporated Island Areas



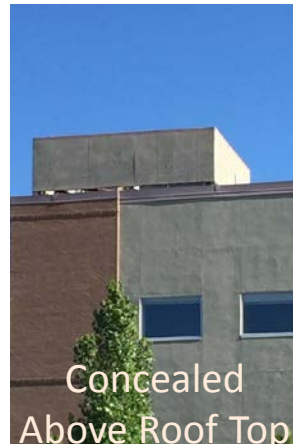
1. Non-Concealed Roof Top
2. Non-Concealed below Roof Line
3. Concealed Above Roof Top
4. None of These
5. No Preference



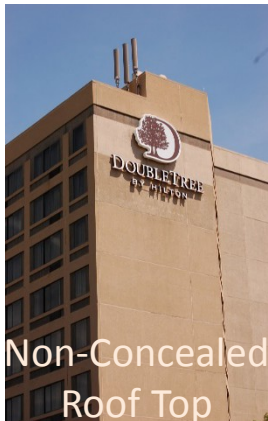
Rank 1-3 The **Base Station** You Prefer in **Incorporated Non-Island Areas**



1. Non-Concealed Roof Top
2. Non-Concealed Below Roof Line
3. Concealed Above Roof Top
4. None of These
5. No Preference



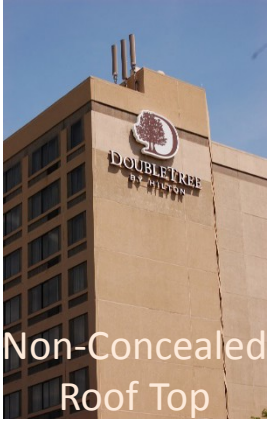
Rank 1-3 The Base Station You Prefer in Unincorporated Island Areas



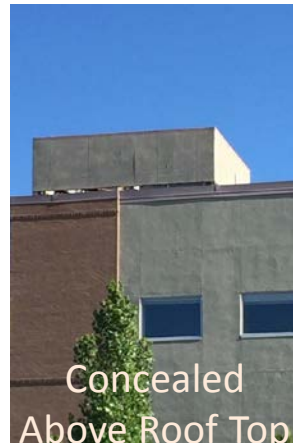
1. Non-Concealed Roof Top
2. Non-Concealed Below Roof Line
3. Concealed Above Roof Top
4. None of These
5. No Preference



Rank 1-3 The **Base Station** You Prefer in **Unincorporated Non-Island Areas East of I-95**



1. Non-Concealed Roof Top
2. Non-Concealed Below Roof Line
3. Concealed Above Roof Top
4. None of These
5. No Preference



Rank 1-3 The **Small Cell Facility** You Prefer in Incorporated Island Areas



1. Non-Concealed
2. Semi-Concealed
3. Concealed
4. None of These
5. No Preference



Rank 1-3 The **Small Cell Facility** You Prefer in Incorporated Non-Island Areas



Non-Concealed

1. Non-Concealed
2. Semi-Concealed
3. Concealed
4. None of These
5. No Preference



Semi-Concealed



Concealed

Next Steps

- Finish Assessments
- Finalize Inventory Map
- Create Catalogue of Inventory
- Theoretical Propagation Mapping
- Identify possible County-owned properties for future fill-in infrastructure.
- Land Use Planning recommendations based on master planning tools
- Ordinance revisions meeting recent state and federal regulations

Wireless Telecommunications

Questions and Open Discussion

Thank You!